

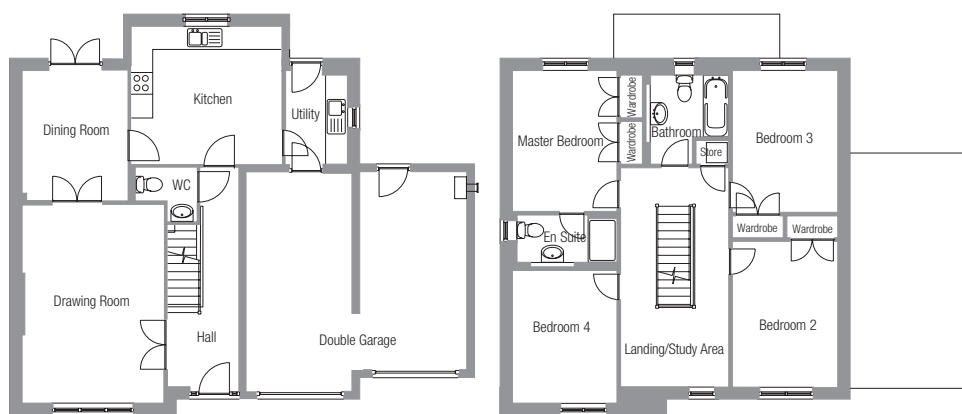


# Carrick

a four bedroom detached house with double garage

the **ambassador** collection  
at Inverugie Meadows, Peterhead

A spacious four bedroom detached home which includes elegant public rooms, large dining kitchen and galleried upper hall.



ground floor

first floor

## ground floor

- Drawing Room**  
17'11" x 12'10" (5.45m x 3.90m)
- Kitchen**  
12'4" x 13'0" (3.77m x 3.95m)
- Dining Room**  
11'9" x 9'6" (3.57m x 2.90m)
- Utility**  
8'0" x 6'3" (2.45m x 1.90m)

## first floor

- Master Bedroom**  
12'8" x 9'5" (3.87m x 2.87m)
- Bedroom 2**  
13'1" x 9'6" (4.00m x 2.90m)
- Bedroom 3**  
12'10" x 9'6" (3.90m x 2.90m)
- Bedroom 4**  
12'0" x 9'5" (3.65m x 2.87m)
- Study Area**  
9'9" x 6'8" (2.97m x 2.04m)
- Bathroom**  
8'0" x 7'1" (2.45m x 2.15m)

**Total Floor Area**  
1,570.61 sq ft (145.91 sq m)  
(excluding double garage)

\*All dimensions are taken to the widest point.



for further information please contact Scotia Homes: Freephone: 0800 0855 455  
[www.scotia-homes.co.uk](http://www.scotia-homes.co.uk)

## the small print...

The artist's impression and floor plans in this document are intended for illustration purposes only and may change for example in response to market demand, ground conditions, Local Authority and NHBC etc. Consequently, they should be treated as general guidance and cannot be relied upon as accurately describing any of the Specified Matters prescribed by any Order made under Property Misdescriptions Act 1991. Nor do the contents constitute a contract, part of a contract or warranty. The external colour finishes and landscaping, as detailed within this impression, are guidelines only and can vary on each development or plot. For clarification, please ask for details.