

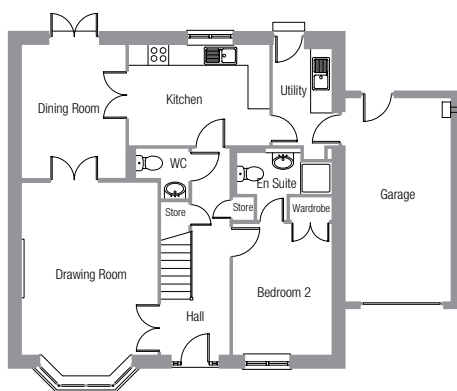


# Fullarton

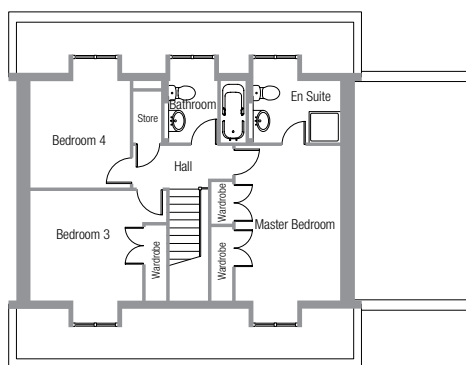
a four bedroom detached house with garage

the **ambassador** collection  
at Inverugie Meadows, Peterhead

An attractive detached home offering flexible accommodation with a spacious drawing room, separate dining room and breakfasting kitchen.



ground floor



first floor

## ground floor

**Drawing Room**  
16'3" x 12'11" (4.95m x 3.93m)

**Kitchen**  
13'3" x 9'6" (4.05m x 2.90m)

**Dining Room**  
12'7" x 9'10" (3.85m x 3.00m)

**Utility**  
9'1" x 5'7" (2.78m x 1.70m)

**Bedroom 2**  
12'4" x 9'4" (3.77m x 2.85m)

## first floor

**Master Bedroom**  
14'8" x 9'11" (4.46m x 3.03m)

**Bedroom 3**  
12'11" x 10'4" (3.93m x 3.16m)

**Bedroom 4**  
10'1" x 9'5" (3.07m x 2.87m)

**Bathroom**  
7'3" x 5'10" (2.20m x 1.77m)

**Total Floor Area**  
1,519.38 sq ft (141.15 sq m) (excluding garage)

\*All dimensions are taken to the widest point.



for further information please contact Scotia Homes: Freephone: 0800 0855 455  
[www.scotia-homes.co.uk](http://www.scotia-homes.co.uk)

## the small print...

The artist's impression and floor plans in this document are intended for illustration purposes only and may change for example in response to market demand, ground conditions, Local Authority and NHBC etc. Consequently, they should be treated as general guidance and cannot be relied upon as accurately describing any of the Specified Matters prescribed by any Order made under Property Misdescriptions Act 1991. Nor do the contents constitute a contract, part of a contract or warranty. The external colour finishes and landscaping, as detailed within this impression, are guidelines only and can vary on each development or plot. For clarification, please ask for details.