

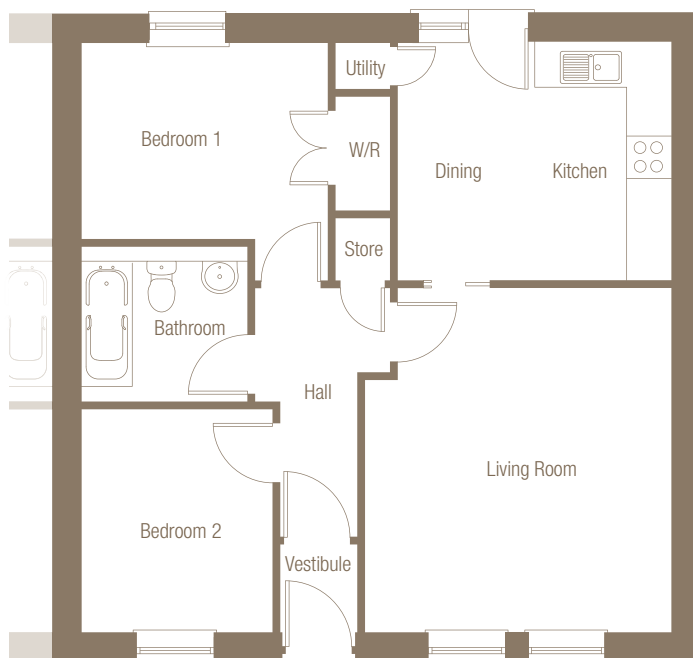


external finish

Render: Light Coloured  
Roof: Marley Duo Edgemere

## Plot 02 (Type 24) two bedroom semi-detached bungalow

**Glenside** Rothienorman



ground floor

**Living Room**  
15'4" x 13'7" (4.67m x 4.15m)

**Kitchen/Dining**  
12'2" x 10'6" (3.70m x 3.21m)

**Bedroom 1**  
11'0" x 8'9" (3.35m x 2.66m)

**Bedroom 2**  
10'0" x 8'6" (3.04m x 2.60m)

**Bathroom**  
7'5" x 6'11" (2.25m x 2.10m)

**Total Floor Area**  
689 sq ft (64 sq m)



location

the small print...

All dimensions and areas are as stated or thereby. Total floor areas are internal and include all partitions. Bedroom dimensions are taken to wardrobe/store.

The floor plans and illustration in this document are intended for illustration purposes only and may change for example in response to market demand, ground conditions, Local Authority and NHBC etc. Consequently, they should be treated as general guidance and cannot be relied upon as accurately describing any of the Specified Matters prescribed by any Order made under Property Misdescriptions Act 1991. Nor do the contents constitute a contract, part of a contract or warranty. For clarification, please ask for details.



for further information please contact Scotia Homes: Freephone: 0800 0855 455  
[www.scotia-homes.co.uk](http://www.scotia-homes.co.uk)