



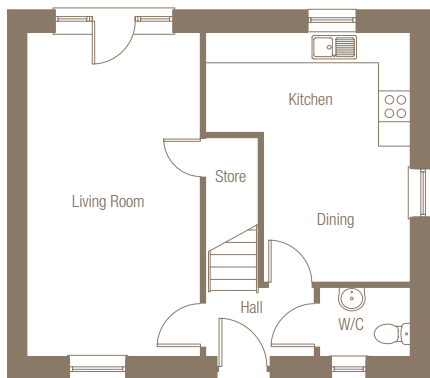
external finish

Render: Dark

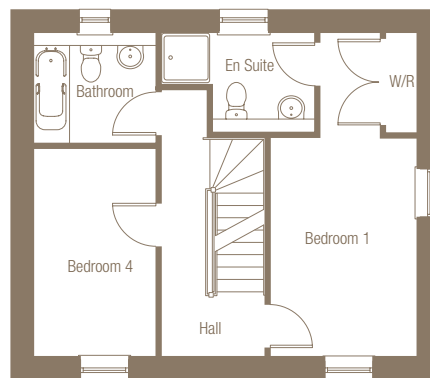
Roof: Marley Duo Edgemere

# Plot 08 (Type 19) four bedroom detached townhouse

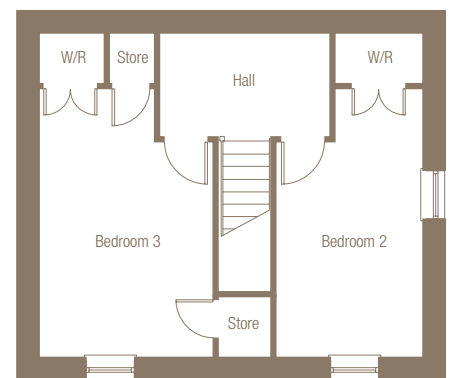
**Glenside** Rothienorman



ground floor



first floor



second floor

## ground floor

- Living Room**  
20'1" x 10'9" (6.10m x 3.26m)
- Kitchen**  
12'7" x 6'2" (3.83m x 1.87m)
- Dining**  
9'3" x 9'0" (2.82m x 2.75m)

## first floor

- Bedroom 1**  
13'6" x 9'0" (4.12m x 2.75m)
- En Suite**  
6'3" x 6'2" (1.91m x 1.87m)
- Bedroom 4**  
12'10" x 7'7" (3.92m x 2.30m)
- Bathroom**  
7'7" x 6'10" (2.30m x 2.07m)

## second floor

- Bedroom 2**  
13'3" x 10'9" (4.03m x 3.26m)
- Bedroom 3**  
13'3" x 9'0" (4.03m x 2.75m)
- Total Floor Area**  
1278 sq ft (119 sq m)



location

### the small print...

All dimensions and areas are as stated or thereby. Total floor areas are internal and include all partitions. Bedroom dimensions are taken to wardrobe/store.

The floor plans and illustration in this document are intended for illustration purposes only and may change for example in response to market demand, ground conditions, Local Authority and NHBC etc. Consequently, they should be treated as general guidance and cannot be relied upon as accurately describing any of the Specified Matters prescribed by any Order made under Property Misdescriptions Act 1991. Nor do the contents constitute a contract, part of a contract or warranty. For clarification, please ask for details.



for further information please contact Scotia Homes: Freephone: 0800 0855 455  
[www.scotia-homes.co.uk](http://www.scotia-homes.co.uk)